

A NEW FOSSILIFEROUS SITE IN THE SIBICIU VALLEY (BUZĂU COUNTY)

CRUȘOVEANU Simona, MACOVEI Monica, GRIGORE Dan

Abstract. The paper presents a new paleontological site mapped in the Sibiciu Valley, which is near the diatomite quarry - Burdușoaia. On this site, outcrops of Palaeogene dysodilic shales which belong to the Tarcău Nappe, from Moldavide's Unit, have been found. The outcrop examination revealed two rich fossiliferous layers in the approximately 10 m thick package of disodiles. The preliminary analysis of palaeontological content reveals the presence of fishes remains (almost entire skeletons, scales, teeth, regurgitaliths, otoliths) from Clupeidae and Merlucidae groups, representing the main fossils and other fossil remains (possible of algae or/and arthropods) which complete the assemblage.

Keywords: paleontologic site, Sibiciu, Paleogen, fossil fishes.

Rezumat. Un nou sit fosilifer în Valea Sibiciului (județul Buzău). În lucrare este prezentat un nou sit paleontologic cartografiat în Valea Sibiciului, care se află în apropierea carierei de diatomite - Burdușoaia. În acest sit aflorăză șisturi disodilice paleogene din Pânza de Tarcău, aparținând Unității Moldavidelor. Examinarea aflorimentului a evidențiat două strate fosifere bogate în pachetul de disodile de aproximativ 10 m grosime. Analiza preliminară a conținutului paleontologic relevă prezența resturilor de pești (schelete aproape întregi, solzi, dinți, regurgitalite, otolite) din grupele Clupeidae și Merlucidae, reprezentând principalele fosile și alte resturi fosile (posibil de alge și/sau artropode) care completează asociația.

Cuvinte cheie: sit paleontologic, Sibiciu, Paleogen, pești fosili.

INTRODUCTION

The paleontological site (outcrop), briefly described in this paper, is located N 45 degrees 20.651' and E 026 degrees 21.905' (GPS coordinates), near the Sibiciu de Sus village - Pătârlagele town area (Fig. 1). The site opens with dysodilic shales and fossils belonging to the Kliwa Formation, part of the Tarcău Nappe from Moldavide (SĂNDULESCU, 1984).

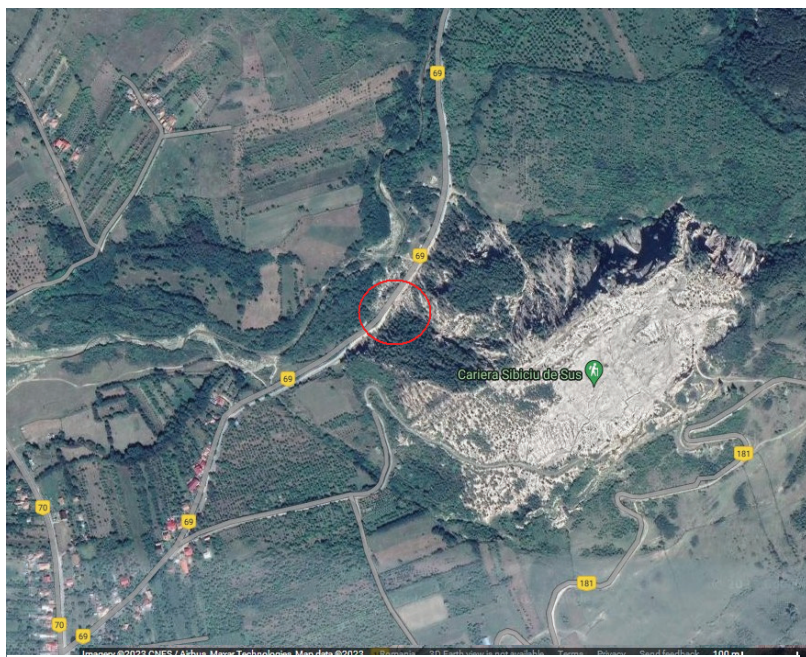


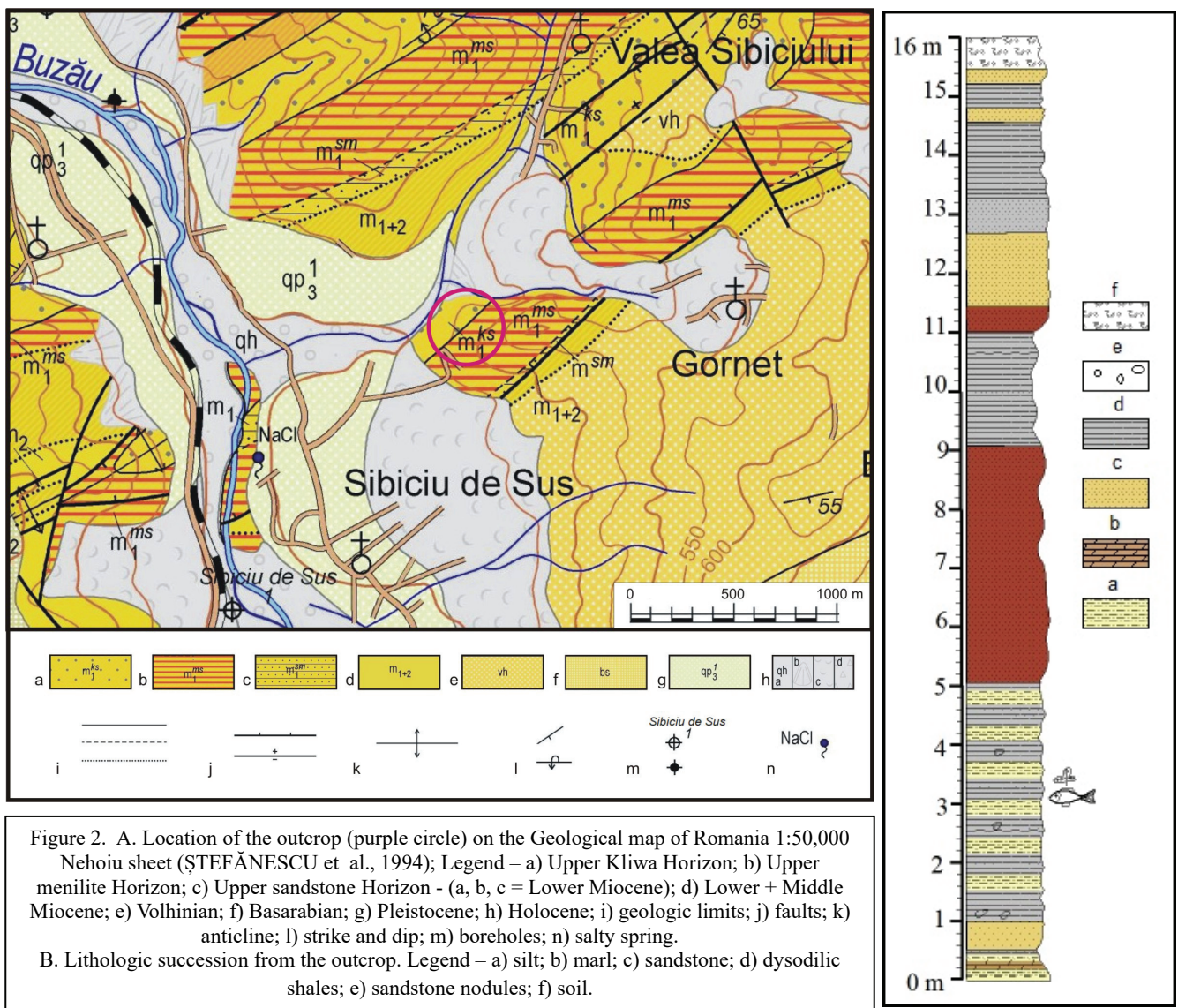
Figure 1. Location of site (outcrop) on the Google-Earth map (satellite image).

was published by FRUNZESCU & BRĂNOIU in 2004 – Geological Monograph of the Buzău River Basin, in which details of the diatomite quarry area of Burdușoaia hill appear.

Geological formations from the region have been analysed by STOICA (1944), who describes the sequence of Paleogene deposits with their fossil content without specifying the location of the fossiliferous points. Many studies were subsequently carried out in order to produce geological maps at a scale of 1:50,000 by IGR teams, coordinated by ȘTEFĂNESCU (1993, 1994). CONSTANTIN in his PhD thesis (2000) and in IGR reports (1996, 1998a and b), made a brief presentation of a site from the Sibiciu Valley, without a precise location. In 1999, the same researcher mentions the site in the Sibiciu Valley in a synthetic paper on all the Oligocene-Miocene deposits in the area of the Eastern Carpathians and up to the Ialomița Valley. MELINTE (1993) draws, on the basis of nanoplankton, the boundary between Paleogene and Miocene deposits in the region. An extensive monography, with many details

GEOLOGIC FRAMEWORK

The geology of the region (Fig. 2A), at the boundary of the Paleogene Carpathian Flysch (Buzău Mountains) with Miocene-Pliocene molasse deposits, is relatively complicated by numerous faults and overlaps of rock packages, following a general ENE-WSW direction but also faults transverse to this direction. The structure belongs to the Tarcău Nappe in which several formations have been separated: Vinețișu, Fusaru, lower dysodilic member, bituminous marls member, lower menilites member, Ardeleuța, Podu Secu, Tarcău Sandstone, Horgazu, Cârnu, Audia (GUERRERA, 2012). The lithological succession described by previous authors (STEFANESCU et al., 1993) comprises from the base to the top: coarse schistose flysch ± marls with globigerines – in Colți Formation (Ypresian); quartz sandstones - Lucăcești Sandstone (Priabonian); menilites (cherts), bituminous marls, Tylawa limestones, tuffs (a) - lower horizon of menilites and white marls with Lingurești Formation (Fierăstrău Sandstone) at the base (Oligocene); dysodilic shales, siderite marl-calcareous, thin quaternary sandstones and Tylawa limestones - Lower horizon of dysodilic shales (Oligocene); quartz-schist flysch with Jasio limestones - Lower horizon of Kliwa sandstones (Oligocene); Schistose flysch - Topilele Formation (Oligocene Lower - Miocene); Schistose-coarse flysch with tuffs (a. Vinețișu. B. Mlăcile) - Podul Morii Formation (Oligocene Lower - Miocene); quartz sandstones and sands with Bătrânilor tuffs - Upper Kliwa Sandstone Horizon (Lower Miocene); menilites, diatomites, disodiles, quartz sandstones and Bătrânilor tuffs - Upper Menilite Horizon (Lower Miocene); quartz sandstones, dysodilic shales, tuffs - Upper Menilitic Sandstone Horizon (Lower Miocene); gypsum, marls - Muncelul Cărmănesc Gypsum (Lower Miocene); massive and thin grey sandstones, red and grey pelites, gypsum, tuffs (Lower - Middle Miocene).



The Burdușoia Hill is an anticline with N30°E orientation, whose tectonic detail is complicated, cumulating the effect of dislocations in the Tarcău foreland with those of pene-contemporaneous marine sedimentation slides. In the quarry talus it appears as a straight or slightly eastward-dejected normal anticline, with flat or weakly folded flanks due to post-depositional flows of constituent materials and, especially, at the level of those near the pits (FRUNZESCU & BRĂNOIU, 2004).

MATERIALS AND METHODS

The present study began with fieldwork in the fall of 2022 consisting of sampling fossiliferous levels, location determination, layers measurements and overall analysis of the position of sedimentary deposits.

The collected material was prepared in the laboratory (cleaning, drying, sorting, stabilization of non-cohesive fragments), following the selection of fossil material, photographs of the samples were taken and partially analysed under binocular magnification (preliminary determinations). The documentation of the geology of the area was carried out through materials available in the library of the Geological Institute of Romania and materials available in the virtual environment (internet); for the fossils, identification books and reference works were used. Data from the bibliography were corroborated with our observations in the field or about fossils in order to establish a correlation between these deposits and fossil assemblage and the other previously described.

DESCRIPTION OF SITE

The fossiliferous site is located about 300 m from the village of Sibiciu de Sus (Pătărlagele Village), at the edge of the road (DC 69) that climbs the Sibiciu Valley towards the village of Colți (Fig. 1). The outcrop is part of a wider opening, about 300 m along the road, with variable heights and slopes (10 - 80 m), continuing on the hollow of a left tributary of the Sibiciu stream that outflows from the slope of the Burdușoia Hill. The outcrop is discontinuous, interrupted by wooded portions and drainage valleys. The analysed portion is an opening of dysodilic shales, about 5-8 m wide and about 10 m high, between tree stands.



Figure 3. Outcrop of Ruppelian deposits on the left bank of Sibiciului Valley on the National Road DC69 (North from Sibiciu de Sus village): (a) The outcrop (Upper Paleogene – Lower Miocene); (b) Detail with dysodilic shales and fossils.

The lithology (Fig. 2B) in this outcrop comprises the following terms in succession:

- 30 cm alternating siltstone (quartz with yellow sulphur films) and marlstone (dark brown laminates);
- 6 cm layer of reddish-yellow quartz sandstone with hieroglyphs on top;
- 13-14 cm thicker layered dysodilic shales;

- 0.5 cm sandstone similar to the one below, the strata are arranged almost at an inclination of 85°-90°;
- 4 m of alternating siltstones and dysodilic clays with interbedded greyish brown-creamy-beige nodules, there are also sandstone laminae with gypsum (shiny stone) florescence surface;
- 4 m layer of reddish-brown sandstone alternating in larger blocks, smaller on the outside;
- 2 m fine dysodilic shales with rare 0.5 layers of sandstone;
- 40 cm layer of reddish-brown sandstone with manganese dendrites;
- 110 cm slightly altered yellowish sandstone;
- 60 cm hard sandstone with silica;
- 1.5 m dysodilic shales;
- 30 cm hard yellowish sandstone;
- 40 cm dysodilic shales;
- 30 cm hard yellowish sandstone;
- Topsoil.

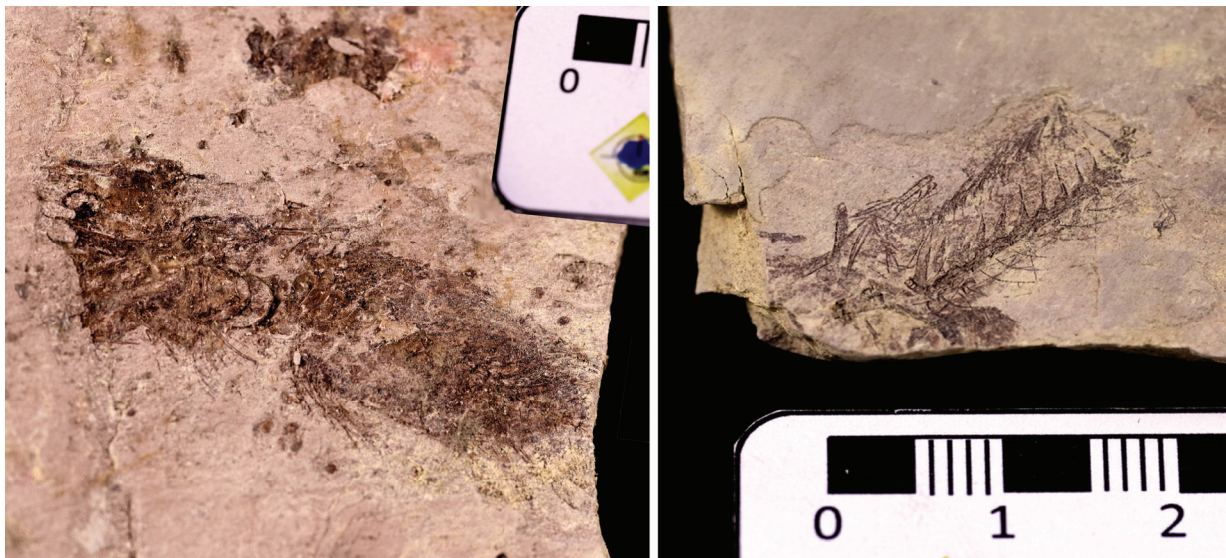


Figure 4. Fish fossils (Oligocene): a. Fam. Merlucciidae; b Incomplete skeleton of a Periciforme.

It has a steep slope and is part of the northwestern slope of the Burdușoaia hill, where the diatomite quarry is also open on the opposite slope (Fig. 3a).

There two levels containing fossil remains (see column in Fig. 2B). The shales containing the fish remains are rich in sulphur content, with a striped appearance alternating between finer, lighter-coloured material and coarser, grey-tinted material. Small, radiating gypsum nests occur between the strata.

The presence in the Bituminous Facies (Ruppelian in age) of fishes fossils is remarkable, with several species and genera, previously mentioned (STOICA, 1943; CONSTANTIN, 1999); the species mentioned from this area were: *Clupea longimana* (Heckel, 1850) – mentioned as *Meletta crenatta* by POPESCU-VOITEȘTI (1909), *Clupea crenatta* (Heckel) by PAUCĂ (1929) or *Clupea (Meletta) crenata* (Heckel) by PROTESCU (1938); other species - *Scorpaenoides popovicii* (Priem, 1899) and *Serranus budensis* (Heckel, 1856). Also, a similar succession and fossil assemblage was described from the Outer Carpathians, in Poland, by KOTLARCZYK et al. (2006).

Until now, by means of field observations and primary paleontological analysis (determinations) we can affirm that: the fossil remains (Fig. 4, 5 and Plate 1) are unevenly distributed and there are two types of associations: an association containing fish remains (more or less complete – of Clupeidae, Merlucciidae, Syngnathidae etc.) and another association composed of scattered fish remains (scales, bones, teeth, etc.), algae (?), otoliths, regurgitaliths (like those described in BRUSTUR & CHITEA, 2021) and possibly arthropods.



Figure 5. Cycloid scales and algae (?) remains from dysodilic shales layers

CONCLUSIONS

The on-site analysis and preliminary determinations on the fossil remains, as well as the varied association encountered, are prerequisites for more in-depth studies in the site. We believe that the site (outcrop) can become a point of reference in the future after more detailed studies and it may be proposed as a paleontological reserve. At the same time, if the macro-paleontological and micro-paleontological studies demonstrate the presence of the Paleogene here, a reinterpretation of the structure and deposits in the region and a revision of the existing map are required, along with the correlation with similar formations described both in the surroundings and in the rest of the Moldavides (BORDEIANU et al., 2018).

ACKNOWLEDGEMENTS

We are thankful for the support in the paleontological preliminary determination to Dr. Ionuț Gradianu from Museum of Natural Sciences in Piatra-Neamț (fossil fishes) and Dr. Valentin Paraschiv, from the Geological National Museum (fossil plants).

This paper was financially supported by the National Programme “Elaborarea hărților naționale geologice /Elaboration of national geological maps – PN19-45-01-03 and PN23-39-01-01”, both funded by the Romanian Government.

REFERENCES

- BORDEIANU M., GRĂDIANU I., TRIF N., CODREA V. 2018. Commented list of the lower Oligocene fish fauna from the Coza Valley (Marginal Folds Nappe, Eastern Carpathians, Romania). *Oltenia. Studii și comunicări. Științele Naturii*. Muzeul Olteniei Craiova. **34**(2): 7-14.
- BRUSTUR T. & CHITEA F. 2021. Oligocene Digestichnia in the lower part of the Valea Caselor Facies from Fieni (Romania) – a preliminary report. *GeoEcoMarina*. Institutul Național de Cercetare-Dezvoltare pentru Geologie și Geoecologie Marină. București. **27**: 137-151.
- CONSTANTIN P. 1996. Studiul ichtiofaunei oligocene din Carpatii Orientali (Ist part). In: Papaianopol et al.: *Atlasul Paleontologic*. Report (unpubl.). Romanian Institute of Geology. București: 1-49.
- CONSTANTIN P. 1998a. Studiul ichtiofaunei oligocene din Carpatii Orientali (III-rd part). In: Papaianopol et al.: *Atlasul Paleontologic*. Report (unpubl.). Romanian Institute of Geology, București: 1-40.
- CONSTANTIN P. 1998b. Studiul ichtiofaunei oligocene din Carpatii Orientali (IVth part). In: Macaleț et al.: *Atlasul Paleontologic*. Report, (unpubl.). Romanian Institute of Geology. București: 1-19.
- CONSTANTIN P. 1999. Oligocene-Lowermost Miocene Fossil Fish-Fauna (Teleostei). *GeoEcoMarina*. Institutul Național de Cercetare-Dezvoltare pentru Geologie și Geoecologie Marină. București. **4**: 119-134.
- CONSTANTIN P. 2000. *Studiul ichtiofaunei oligocene dintre valea Trotușului și valea Ialomicioarei*. PhD Thesis (unpublished). Universitatea din București. 271 pp.
- FRUNZESCU D. & BRĂNOIU G. 2004. *Monografia geologică a Bazinului Râului Buzău*. Edit. Universității din Ploiești. 458 pp.

- GUERRERA F., MARTÍN-MARTÍN M., MARTIN-PEREZ J., MARTIN-ROJAS I., MICLAUS CRINA, SERRANO F. 2012. Tectonic control on the sedimentary record of the Central Moldavidian Basin (Eastern Carpathians, Romania). *Geologica Carpathica*. Carpathian-Balkan Geological Association. **63**: 463-479
- KOTLARCZYK J., JERZMAŃSKA A., SWIDNICKA E., WISZNIOWSKA T. 2006. *A framework of ichthyofaunal ecostratigraphy of the Oligocene-Early Miocene strata of the Polish Outer Carpathian Basin*. *Annales Societatis Geologorum Poloniae*. Polish Geological Society. Kraków. **76**: 1-111.
- MELINTE M. 1993. Contribuții la stabilirea limitei Oligocen-Miocen în Pânza de Tarcău din Bazinul Văii Buzăului, pe baza asociațiilor de nannoplankton calcaros. *Romanian Journal of Stratigraphy*. Institutul Geologic al României, București. **75**(4): 91-97.
- PAUCĂ M. 1929. Fossile fische aus dem rumanischen Tertiar. *Bulletin de la Section Scientifique de l'Académie Roumaine*. București. **12**(7-10): 50-56.
- POPESCU-VOITEȘTI I. 1909. Contribuții la studiul geologic și paleontologic al muscelor dintre râurile Dâmbovița și Olt. *Anuarul Institutului Geologic al României*. București. **2**: 207-280.
- PROTESCU O. 1938. Reste d'insectes fossiles dans le Tertiaire Roumain. *Comptes-rendus des séances de l'Académie des sciences de Roumanie*. București. **2**(5): 545-556.
- SĂNDULESCU M. 1984. *Geotectonica României*. Edit. Tencică. București. 336 pp.
- STOICA C. 1944. Paleogenul din Valea Sibiciului (județul Buzău). *Revista Muzeului Mineralogic-Geologic*. Cluj. **8**(1): 64-85.
- ȘTEFĂNESCU M., POPESCU I., IVAN V., MELINTE M., ȘTEFĂNESCU V. 1993. Aspect of the possibilities of lithological correlation of the Oligocene-Lower Miocene deposits of the Buzău valley. *Romanian Journal of Stratigraphy*. Institutul Geologic al României. București. **75**: 83-90.
- ȘTEFĂNESCU M., POPESCU I., MELINTE M., IVAN V., ȘTEFĂNESCU M., I. PAPAIANOPOL, POPESCU G., DUMITRICĂ P. 1994. *Harta geologică a României scara 1:50.000, Foaia Nehoiu*. Institutul Geologic al României. București.
- ȘTEFĂNESCU M., POPESCU I., MELINTE M., IVAN V., ȘTEFĂNESCU M., PAPAIANOPOL I., POPESCU GH., DUMITRICĂ P. 1994 (actualized 2014). *Harta geologică a României 1:50.000, Foaia Nehoiu*. Institutul Geologic al României. București.
- ***. https://www.nabohome.org/products/manuals/fishbone/osteology_2.htm (accessed May, 2022).
- ***. <https://www.algaebase.org/> (accessed May, 2022).

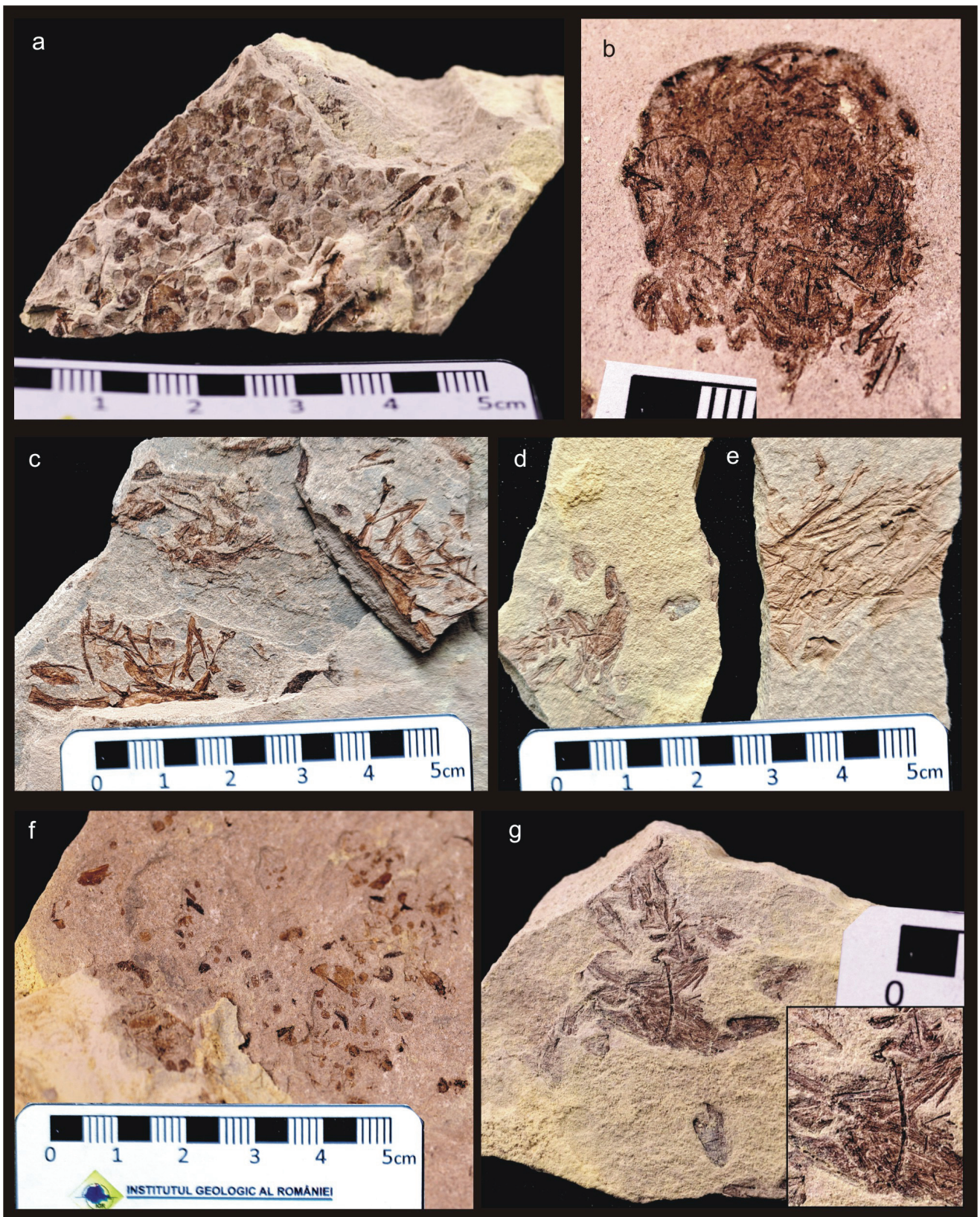
Crușoveanu Simona, Macovei Monica, Grigore Dan

Geological Institute of Romania, 1 st Caransebeș Street, 012271 – Bucharest, Romania.
E-mails: rusu.mona82@gmail.com; macoveimonica@yahoo.com; danl_grigore@yahoo.com

Received: February 22, 2023

Accepted: August 31, 2023

Plate I



a. Fish cycloid scales and bones; b. Regurgitalith; c. Disarticulated fish head skeletal bones; e. *Fish bones*;
f. Urohyal bones; d. g. Undetermined fossil remains.